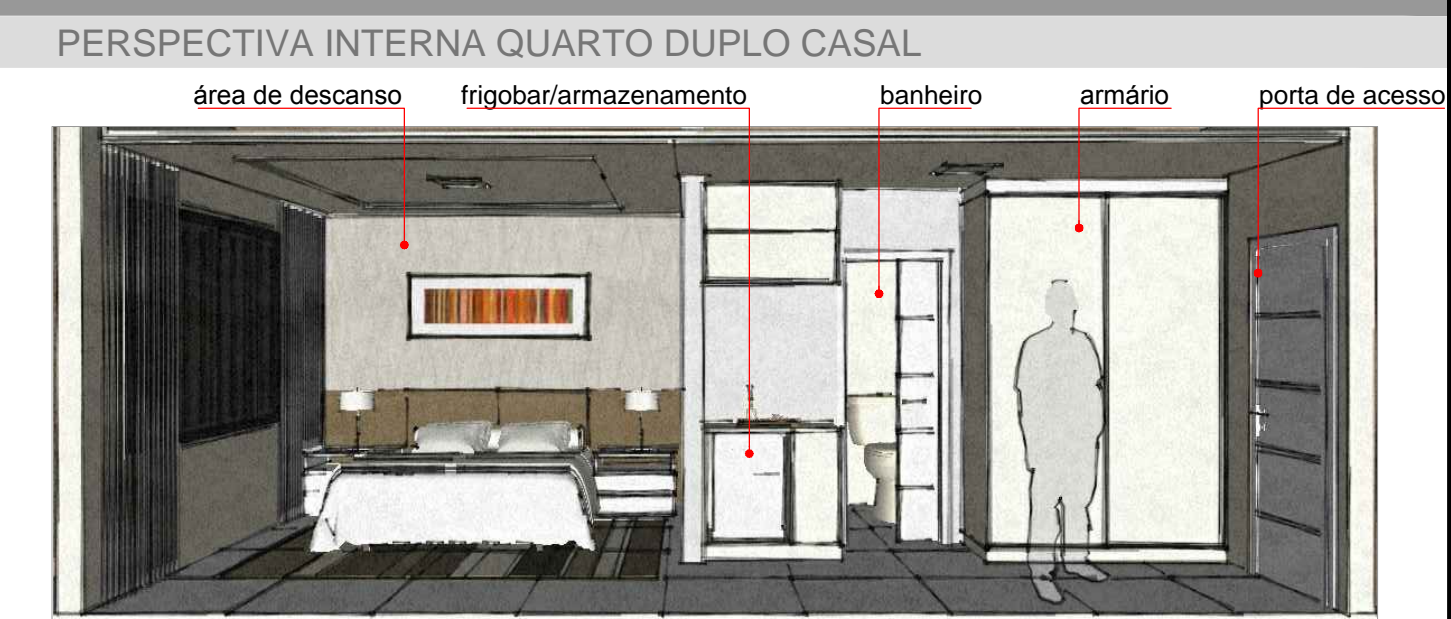
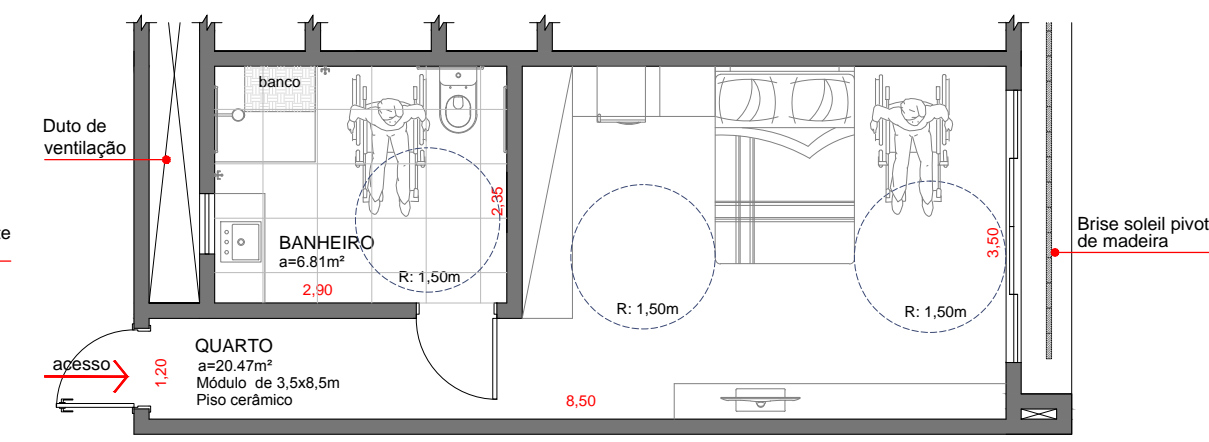
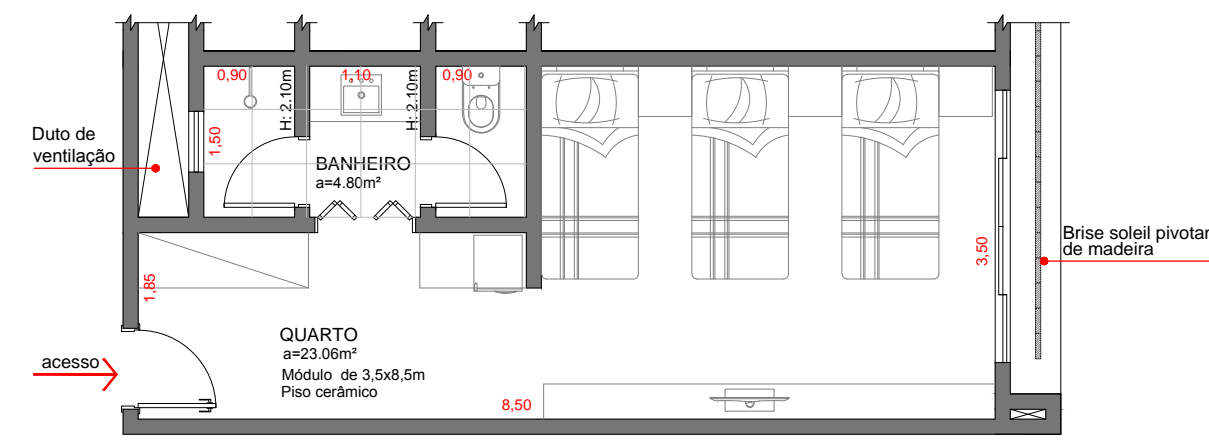
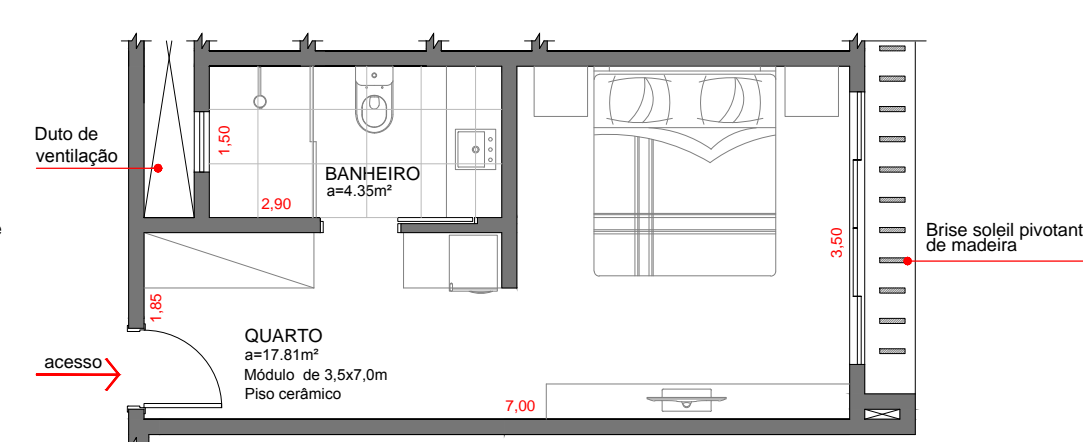
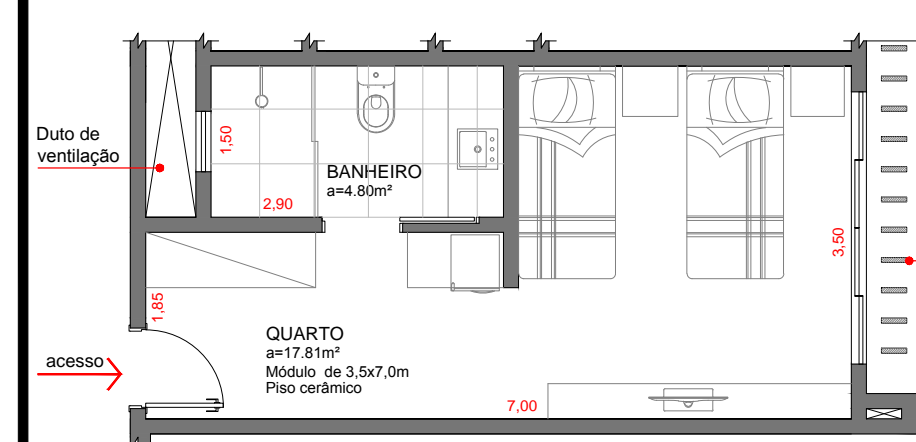
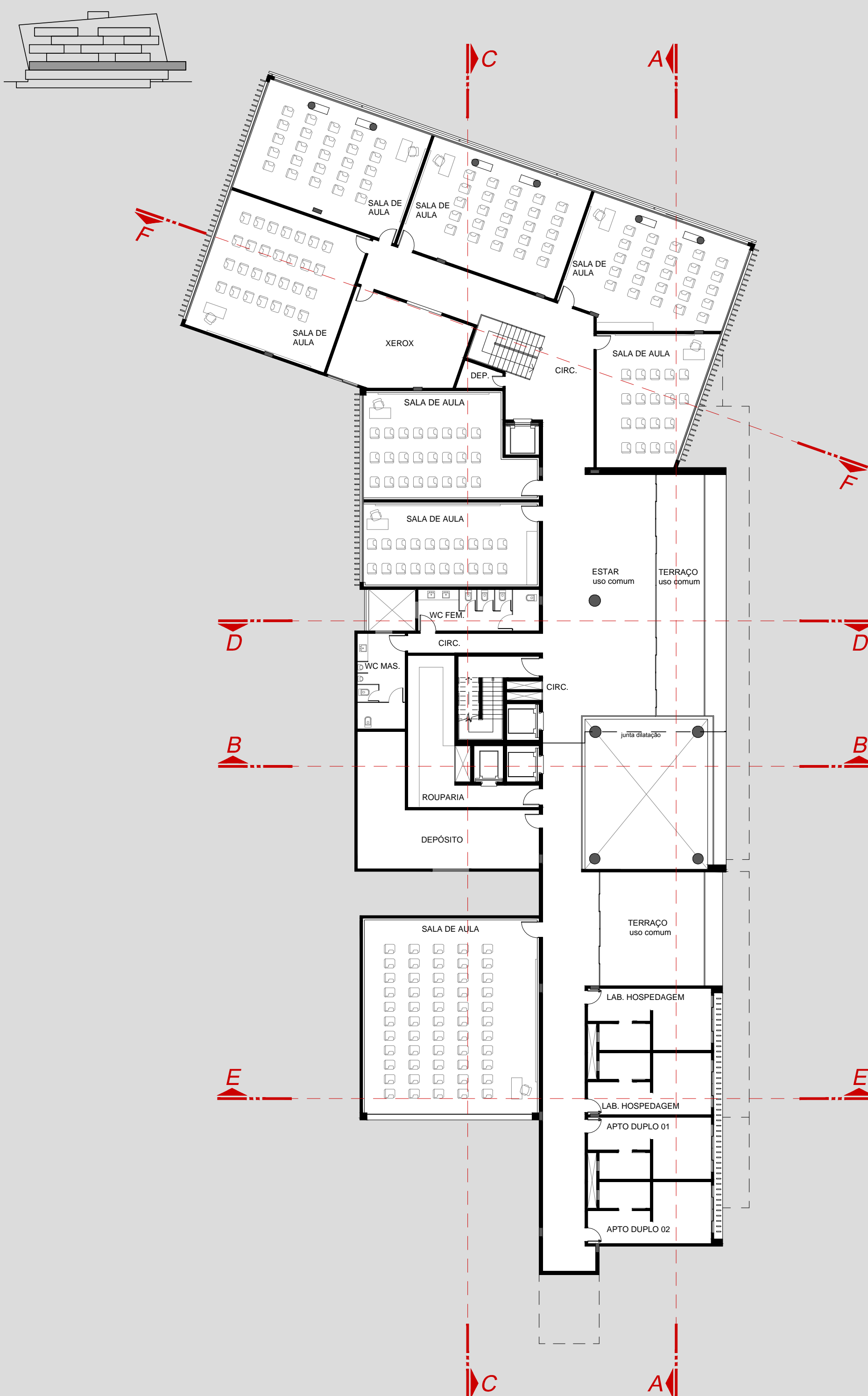


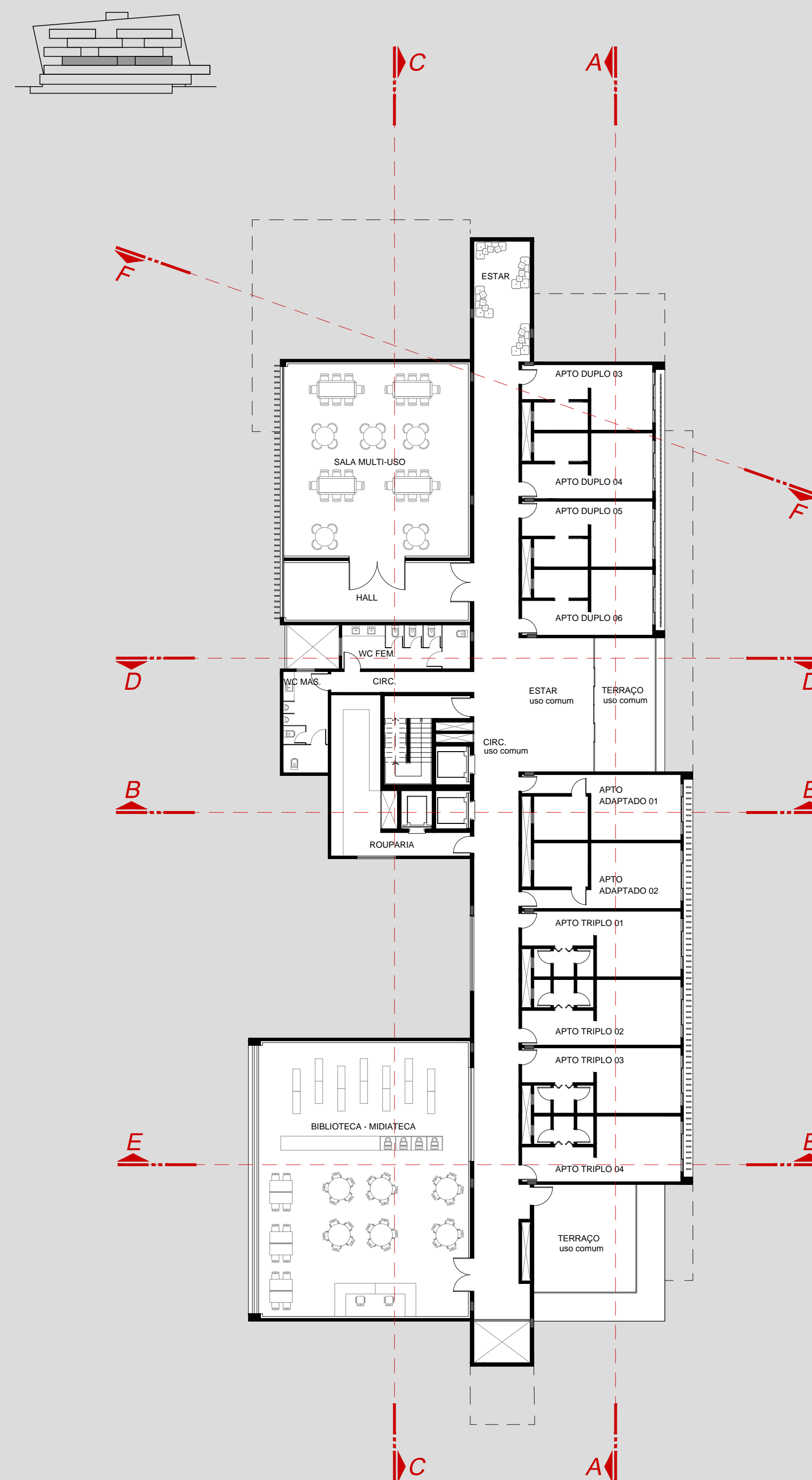
QUARTO DUPLO SOLTEIRO a: 23.45m<sup>2</sup>



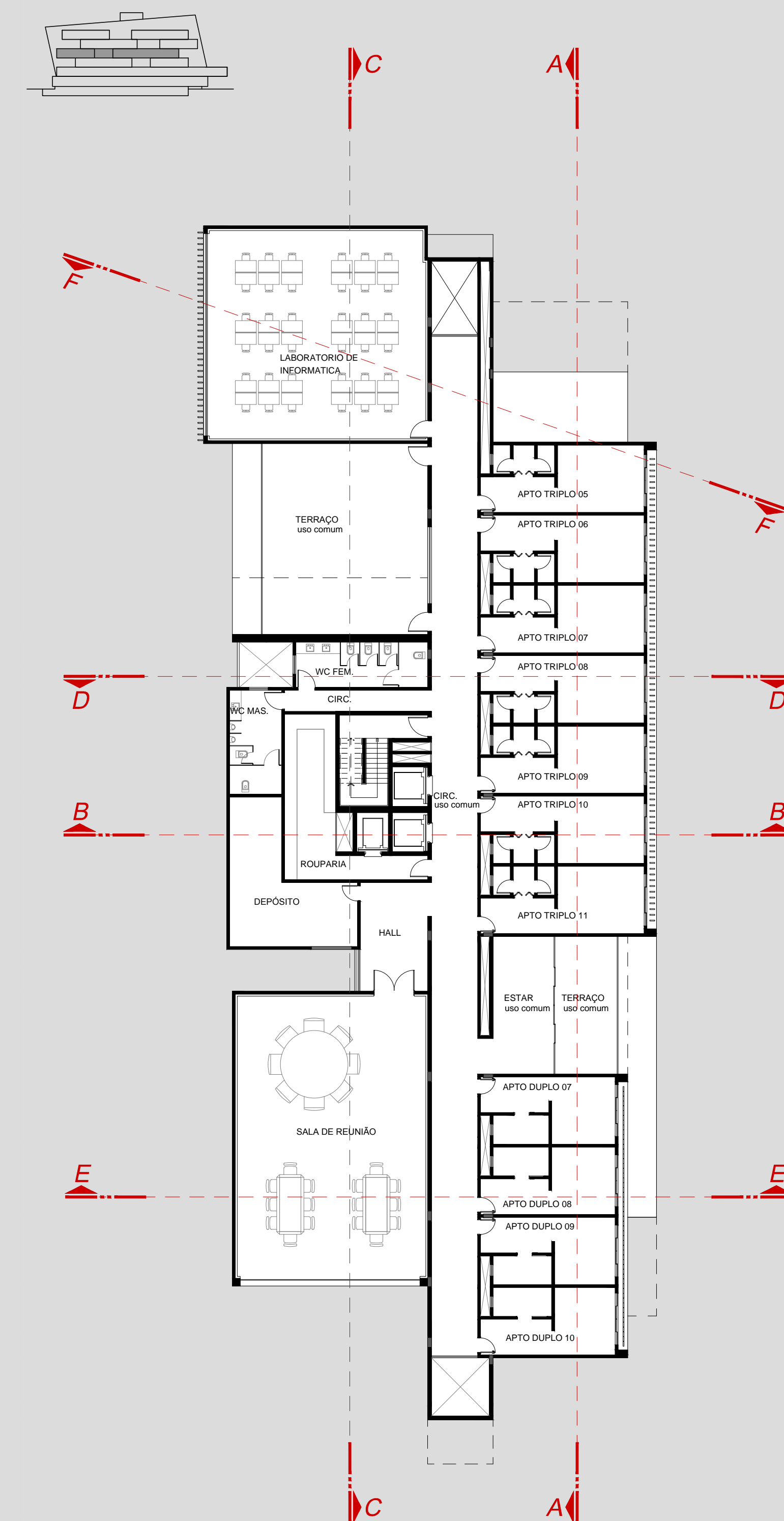
Downloaded from <http://ajph.org/> at University of California, San Francisco on June 11, 2015



© 2006 The Authors  
Journal compilation © 2006 Blackwell Publishing Ltd

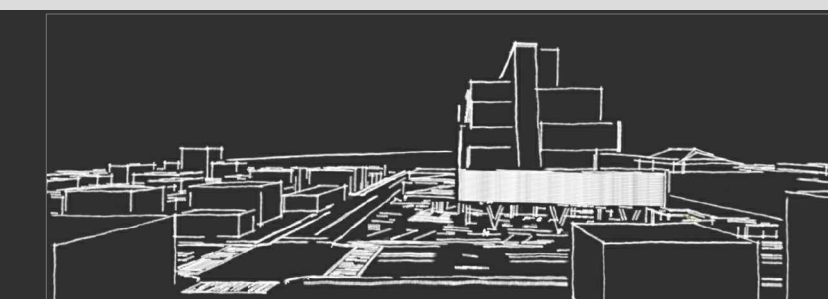
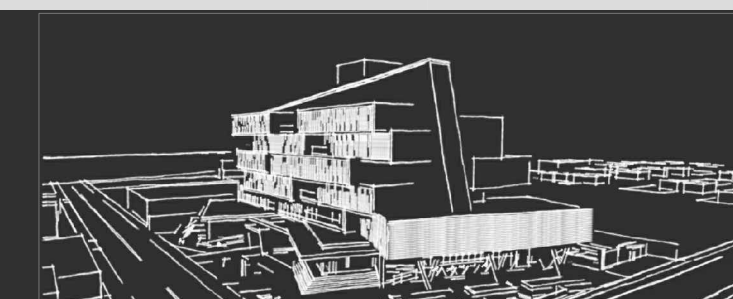


Downloaded from <http://ajph.org/> on November 10, 2014



UNIVERSIDADE DO EXTREMO SUL CATARINENSE  
CURSO DE ARQUITETURA E URBANISMO  
TRABALHO DE CURSO II  
HOTEL -ESCOLA DO SENAC NO MUNICÍPIO DE SOMBRIÓ/SC

ACADÊMICA: PATRÍCIA SCOTTI PINTO  
ORIENTADOR: PEDRO LUIZ KESTERING MEDEIROS  
SEMESTRE: 2014/2



PRANCHA  
4-10